

3D SCANNING FOR Plant Facilities

Yesterday's Practice

Previous methodology required sending one or more crews into the plant to validate pipe elevation using a 4' bubble or laser level. These methods provide limited data, allowed for extrapolation errors and in the case of a nuclear power plant, increased dose to the workforce.

Laser Metrology

3D Laser Scanning allows a crew to scan an entire room within minutes. Acquiring data and 3-D images can be accomplished outside of the normal work flow.

Virtual Walk Through

Make an area walk-down from the comfort and safety of your office. The scanning operation gathers hundreds of thousands of data points that can be rendered into a 3-D image for immediate use or at anytime in the future. Accuracy is within .118 inches at 82 feet.

Archiving Projects

Data is automatically archived eliminating the need for future walk-downs.

Get more Information

Easily collect measurements at any point along a pipe run or within an entire area.

Accurate

Much higher accuracy than traditional laser and 4' levels.

3-D Laser Scanning provides highly accurate verifiable data.

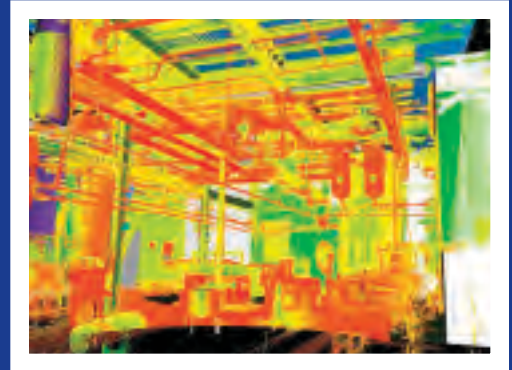
 **BROOKS**
METROLOGY

Charles Vincent
cwvincent@rbrooks.com
(817) 313-1237

Area Photograph



Advanced Scan Data



3-D Model



Measurement Data

